

CLIENT:

Guernsey Housing Association
6 The Bridge,
St. Sampson

ARCHITECTS:

**James Barker, Ricky Mahy
& Create Team
Create Limited**
Shoreline House,
Marion Place,
Port Grat,
St. Sampson,
Guernsey GY2 4TD

01481 259333

info@create-architecture.com
www.create-architecture.com

CONTRACTOR:

J W Rihoy & Son Limited



Rue Clouet

Rue Clouet marked phase one in the redevelopment of the Bouet housing estate, creating 1 and 2 bedroom flats, aimed at older people, with a residents' meeting room at the heart of the development.

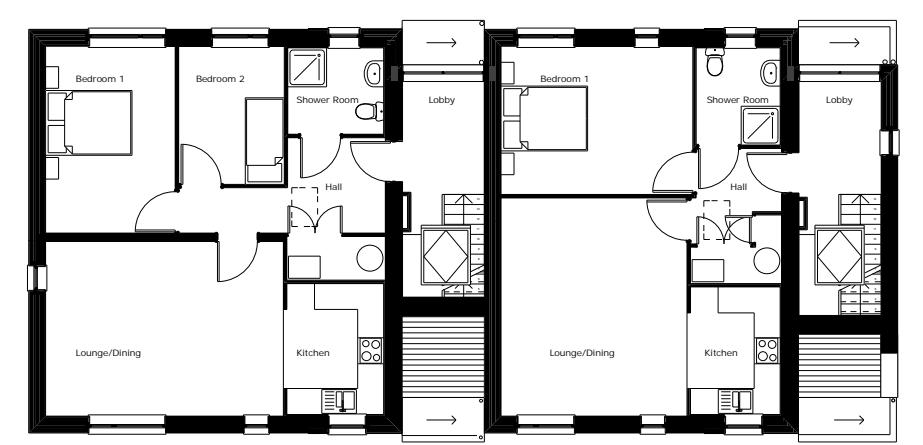
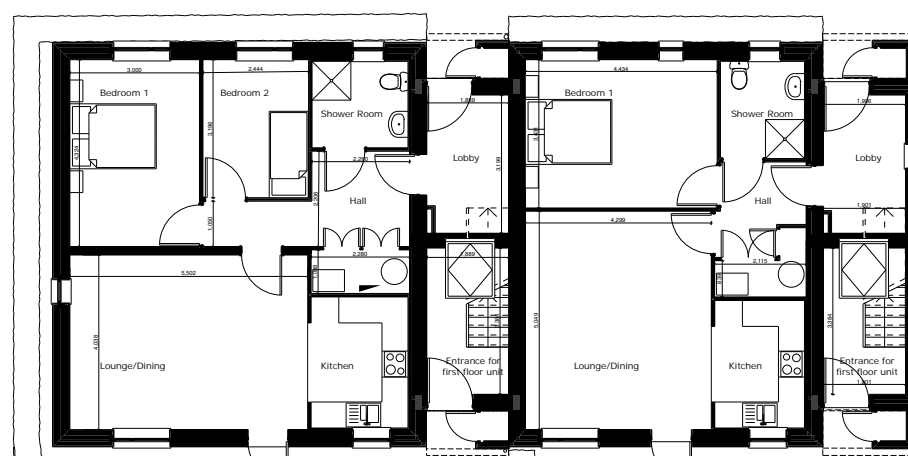
Consisting of mainly 2 storey units with a number of 3 storey buildings to provide focal points. The units each has its own front door giving the occupier ownership by avoiding communal circulation spaces.

A simple palette of materials was used to keep maintenance to a minimum yet provide interest, achieved by using bold coloured render with horizontal timber cladding. Hard landscaping involved a mixture of permeable paving, tarmac, and cobbles to slow traffic and give priority to pedestrians.

Internal flat layouts were designed to be simple and flexible taking their leads from Lifetime Homes and Secure by Design. Thermal and acoustic performance was set above the current building regulations, with units having high levels of insulation, solar panels, constructed to an airtight standard and with MVHR.



Before



AWARDS DEVELOPED BY:



WITH THE SUPPORT OF:

